



Chohan Group
Business Development

& PARTNER

COMPANY PROFILE





Chohan Group
Business Development

PRESENTATION OUTLINE

Introducing YAG

- ☐ Turnover Records
- ☐ About Us
- ☐ Global Footprint
- ☐ Management Team
- ☐ Human Resources
- ☐ Design & Engineering
- ☐ Scope of Interest
- ☐ Housing & Masterplanning
- ☐ Mixeduse Development
- ☐ Infrastructure
- ☐ Healthcare
- ☐ Educational Buildings
- ☐ Structural Steel Factory

Introducing YAG

- ☐ Waste Management
- ☐ Energy
- ☐ Sustainability Strategy
- ☐ Certificates
- ☐ Press
- ☐ Ceremonies





Chohan Group
Business Development

INTRODUCING CHOHAN GROUP & PARTNER

35 years of construction, communication and energy sector experience worldwide with more than 130 projects in 17 countries. Undertaking responsibilities in feasibility, engineering, construction, assembly and operation giving high priority to quality and trust.

Multidisciplinary and diverse nature of our projects which we completed in budget, time and above the quality expectations in our global operations had led us to a general cooperation with Alis Yapı in structural engineering, Gordion Interiors, Akyildiz Law and Yurdaer Architecture.

Housing, hotels, education and governmental buildings, infrastructure, healthcare, power and waste recycle projects are in our scope of interest in our operations with our global partners. YAG Inc. Group, Canada, which has completed important projects with its experienced staff is willing to create added value in win win approach to all parties involved in our projects.





Chohan Group
Business Development

ABOUT US

CHOHAN GROUP & PARTNER has been found in 1977 with the name Enerji Yapı A.Ş. In order to act in the construction of energy plants and transmission lines. Thereafter it developed its area of activity and continued its works in the construction business – shopping centers, schools, hospitals, energy plants, telecommunication facilities, dwelling complexes and various industrial facilities.

Yapı A.Ş. has carried out its activities abroad starting in 1990 under the light of experience exceeding 30 years, especially in Russia, Central Asia Countries and Ukraine. Since 2003 YAG Group moved its headquarters to Canada and also owns a light gauge structural steel factory in Vancouver.

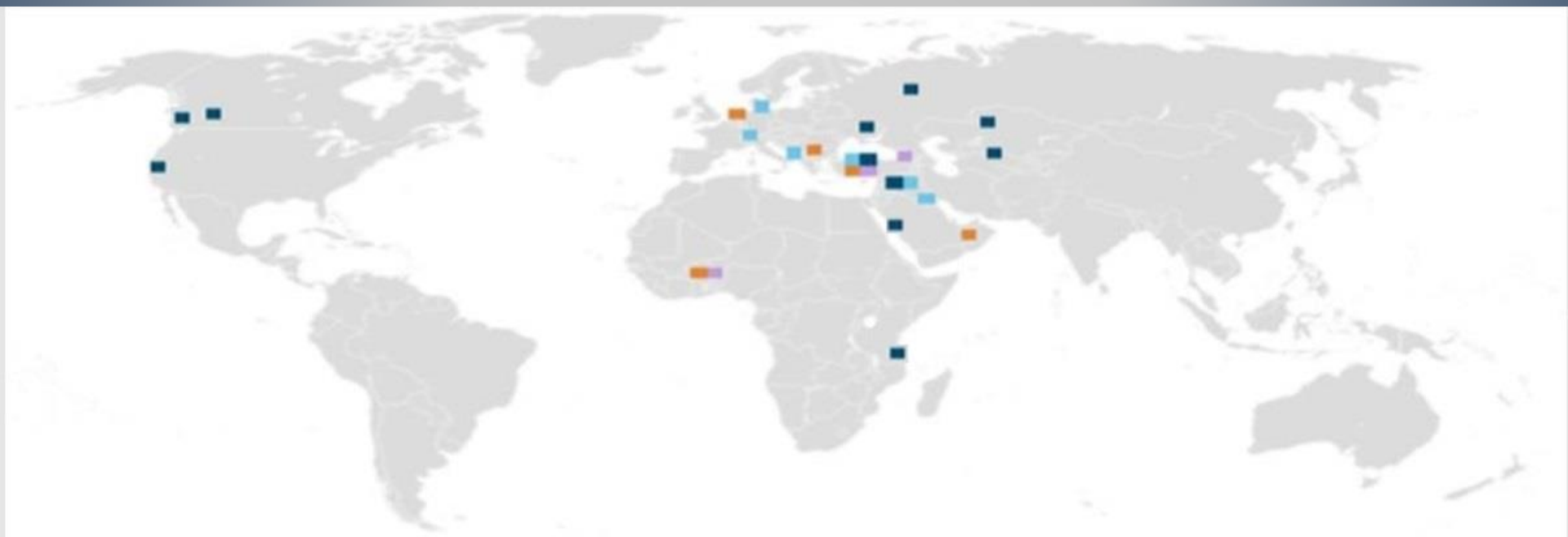
Besides technical staff expert in laws and regulations specialised especially in GOST and SNIP standards and the coordination of resources has an important factor in our success.

In line with our understanding of responsibility and principles we have, we are proud and honored of the completion of more than 130 projects world wide.



GLOBAL FOOTPRINT

Chohan Group
Business Development



i. General Business Services

Provides design & engineering services in architectural works to produce and manage design deliverables, technical specifications, work packages and shop drawings for shopping malls, hotels, high-rises and business centers, hospitals, airports, etc.

ii. Utilized Licensed Software

CAD & BIM – Building Design Suite (AutoCAD, Archicad, REVIT, Lumion), SketchUP Pro □ **Structural Engineering** – Tekla, SAP2000 (Trimble, CSI) □ **Graphics** – Adobe PhotoShop, Adobe InDesign, Adobe Acrobat (Adobe) □ **Project Management** – Primavera, MS Project (Oracle, Microsoft)

iii. Manpower

More than 50 personnel engaged with Architectural Works & Engineering Group, comprising architects, draftspersons, interior architects, engineers, technicians, administrative staff, industrial designer and urban planner. Members of the Group are highly trained and proficient in utilizing CAD & BIM applications and equipped with the most recent technological advances in its area of expertise.



SCOPE OF INTEREST

CG&P provides full range of design and engineering, procurement, in-house fabrication, modularization construction, commissioning and start-up, operation and maintenance, and project management services (EPCC, EPC, PC or C only) in the following sectors:

Housing & Development ? Infrastructure ? Healthcare ? Energy ? Waste Management ? Educational Buildings

? Mixeduse Development



? Housing&MasterPlanning



? Educational Buildings



? Infrastructure



□ Waste Management



? Energy



? Healthcare



HOUSING & MASTER PLANNING

CG&P team has been the executors of a broad range of masterplanning project and housing projects in many countries like Turkey, Russia, USA, Ukraine, Khazakistan.

📍 Housing & Master Planning



HOUSING & MASTER PLANNING

❑ OYK Housing Development



❑ OYK Housing Development



❑ Kiew Dynpro Houses, Abalon



❑ Malatya Housing Project



HOUSING & MASTER PLANNING

Abolan Residential



Capital Astana



Feneryolu Apt.



Gul Apartment



HOUSING MASTER PLANNING

📍 Green Village



📍 Yogurtcu Park Houses



📍 PLT Boğazici



📍 PLT Bogazici



HOUSING & MASTER PLANNING

MS Cengelkoy Housing



MS Cengelköy Housing



Parkview Apartmant



Bodrum Villas



HOUSING & MASTER PLANNING

❓ Cigili Housing Development



❓ Cigili Housing Development



❓ PortV Resort



❓ PortV Resort





Chohan Group
Business Development

HOUSING & MASTER PLANNING

📍 Kalkan Resort



📍 Kalkan Resort



📍 Alagoz Housing Development



📍 Cadde Apartments



HOUSING & MASTER PLANNING

📍 Ukraine Residences



📍 Ukraine Residences



📍 EST Housing Development



📍 EST Housing Development





Chohan Group
Business Development

MIXEDUSE DEVELOPMENT

CG&P team has constructed many mixed use developments in regions like Turkey, Russia, Khazakistan and Ukraine.

📍 Mixeduse Development





Chohan Group
Business Development

MIXEDUSE DEVELOPMENTS

📍 Cittantica Touristic Facilities



📍 Astana Turkish Embassy



📍 Capital City Astana



📍 Dubna Train Station



MIXEDUSE DEVELOPMENTS

Capital Residences & Offices



Gokmahal



Et Balık Kurumu



Helicopter Simulation Center



MIXEDUSE DEVELOPMENTS

📍 Microeron Complex



📍 New Mega



📍 Nun Auditorium



📍 Satelite Communication Center



INFRASTRUCTURE

CG&P's experience in infrastructure had diversified with city sewage systems, bridges and roads.

📍 Infrastructure



INFRASTRUCTURE PROJECTS

📍 Haliç Bridge



📍 Irsty Bridge



📍 Suluova Sewage System



📍 Bridge Construction



Podolsky Bridge



Bridge Construction



Suluova Sewage System

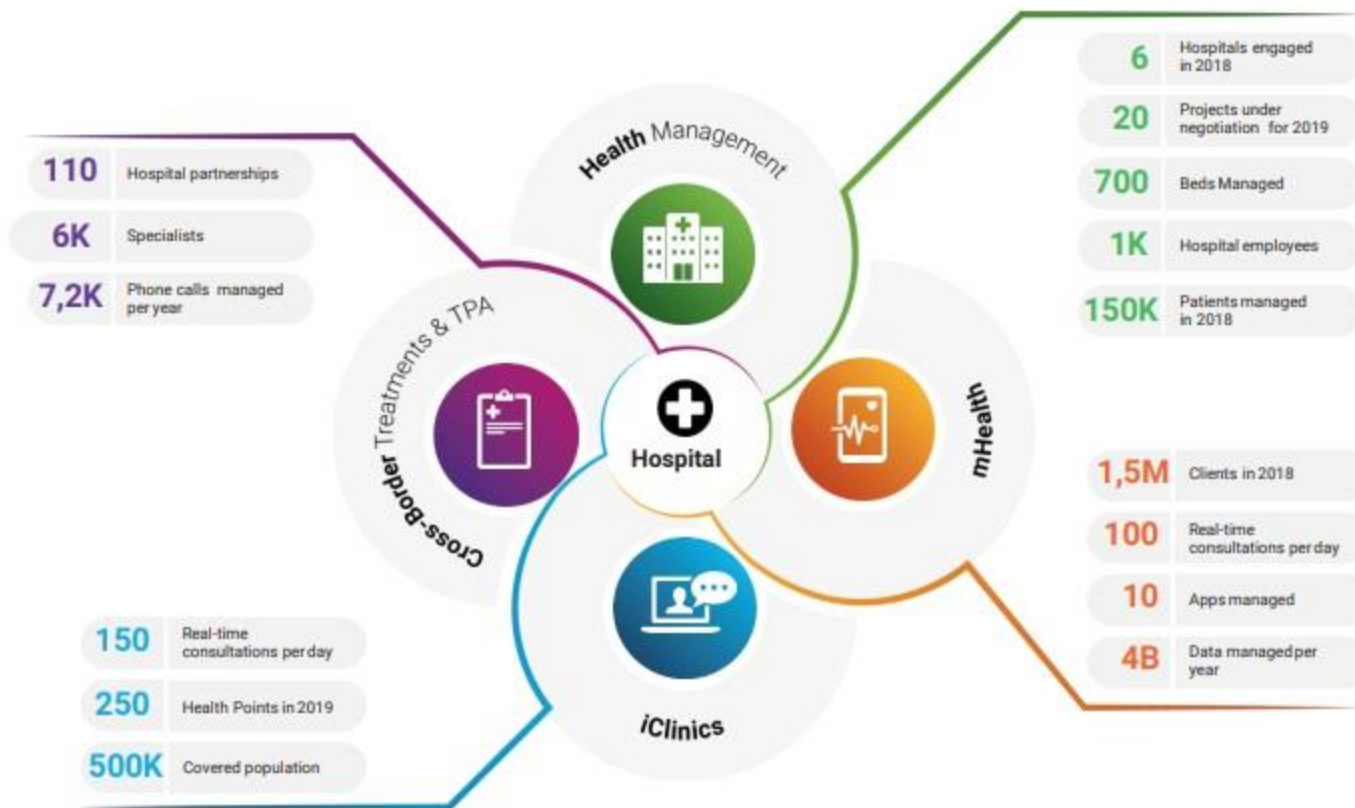


CG&P constructed five hospitals in Turkey, Turkmenistan, Russia and Jordan.

We have also the representative and partner of Sphera which is a worldwide leading company provides health care services through hospital management activities and telemedicine.

📍 Healthcare

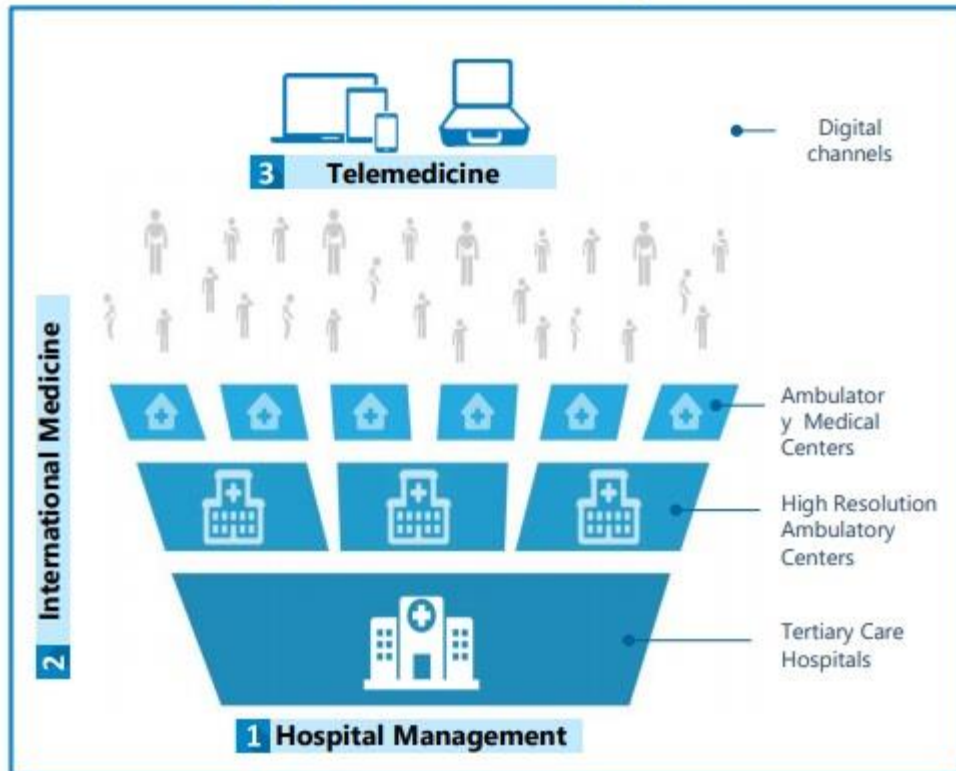




Fully-Integrated Healthcare Services

- Health Management**
 World-class hospital management capabilities with high level of flexibility and urgency. *Currently operating health centers Public & Private owners.*
- iClinics**
 Remote health tracking & consultation via device-equipped Kiosks & Suitcases. *Triage, Chronic Diseases, Mother & Child health, doctor-to-doctor platform, etc.*
- mHealth**
 Medical services through health care plans and digital solutions. *eHealth Records, Symptom Checker, Video Consultations.*
- Crossborder treatments & TPA**
 Cross-border treatment advice, booking and concierge services in the context of Medical Procedures or Critical Diseases in under-served locations. *Checkups, local and international medical treatments, medical network.*

Sphera's healthcare ecosystem



Value Proposition

Hospital Management



- Strategic Direction Setting
- Clinical Transformation
- Performance Excellence
- Technology Transformation
- Refurbishment & Construction
- Due Diligence & Financing

International Medicine



- Cooperation with top-tier medical institutions in Europe and the US
- Provide cross-border treatments to patients
- International recruitment & rotational programs

Telemedicine



- Patients have 24/7 access to doctors through the App
- Suitcases and kiosks to diagnose patients remotely
- Doctor to doctor connection platforms to share patients cases

Geographical diversification

Sphera is currently present in 25 countries through its 8 offices, 15 operational and medical hubs (medical network), and 12 markets with its core clients.

Our clients

▶ Governments



▶ Clients and Partners



▶ Get to know more...

Founded in 2012 and headquartered in Barcelona, Sphera is now present in four continents and continues expanding its health care solutions across the globe reinventing medical care services.

Fully-Integrated Healthcare Services Model



Fully-Integrated Healthcare Services

Health Management
World-class hospital management capabilities with high level of flexibility and urgency. *Currently operating health centers Public & Private owners.*

iClinics
Remote health tracking & consultation via device-equipped Kiosks & Suitcases. *Triage, Chronic Diseases, Mother & Child health, doctor-to-doctor platform, etc.*

mHealth
Medical services through health care plans and digital solutions. *eHealth Records, Symptom Checker, Video Consultations.*

Crossborder treatments & TPA
Cross-border treatment advice, booking and concierge services in the context of Medical Procedures or Critical Diseases in under-served locations. *Checkups, local and international medical treatments, medical network.*

HEALTHCARE

📍 Hospital



📍 Archman Medical Cener



📍 Sivas SSK Hospital



📍 Archman Medical Cener



HEALTHCARE

📍 Sivas SSK Hospital



📍 Hospital



📍 Dubna Senior Citizen House



EDUCATIONAL BUILDINGS

CG&P which is founded originally with services in energy sector in 1977 had accomplished many energy projects like electricity distribution, transformation centers and lighting projects.

📍 Educational Buildings



EDUCATIONAL BUILDINGS

Umumy Bilim Beryan Mekdeb



Umumy Bilim Beryan Mekdeb



Umumy Bilim Beryan Mekdeb



Ankara Apprentice School



EDUCATIONAL BUILDINGS

❓ Balıkesir Univerity Havran



❓ METU Bus. Admin. Faculty



❓ Osmangazi Primary School



❓ Guneyusu Apprentice School



WASTE MANAGEMENT

CG&P is the representative of FB Waste Recycling GmbH in Pakistan which is a leading company in designing, implementing and operating, waste Management and recycling plants.

Waste Management





FB Waste Recycling – Example Sorting & Selling of solid waste and recycled materials



Sorting out of all non-organic recycling-materials out of city-waste

- PET, Plastic
- wood
- glass
- iron
- paper,

Sale of sorted recycling materials



FB Waste Recycling – Services

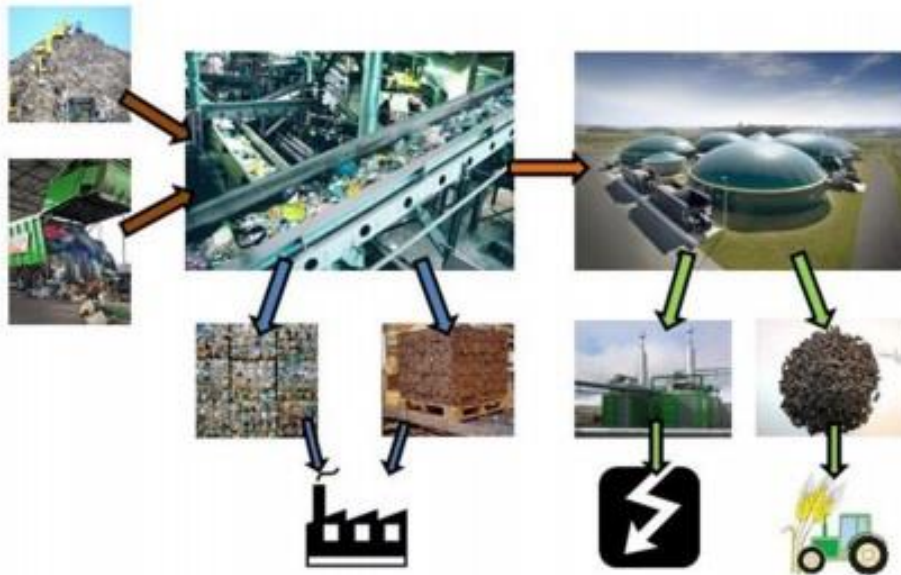
We offer planning, engineering and project management in the following areas

- Solid and liquid waste treatment and rehabilitation
- Waste recycling
- Biogas-plant, production of bio-gas
- Biomass-to-electric energy and Biomass-to-bio fertilizer
- Sewage treatment
- Environmental engineering
- Electrical engineering
- Construction
- Water supply, Water management

We prepare feasibility studies and business plans for municipality waste solutions

FB Waste Recycling Examples - Biomass to energy transformation

biogas plants



Recycling of all non-organic materials
by sorting out of the waste

Lasting organic waste = **biomass**

Conversion in biogas plant into

biogas

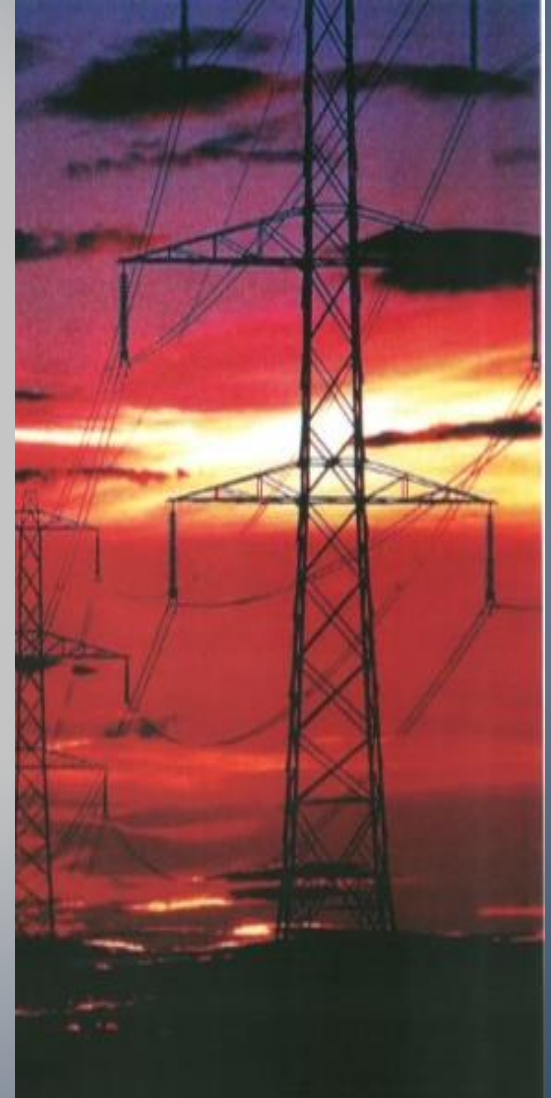
Biogas-to-electric energy

Lasting bio-mass after fermenting into

bio-fertilizer

CG&P which is founded originally with services in energy sector in 1977 had accomplished many energy projects like electricity distribution, transformation centers and lighting projects.

☐ Energy



❑ Ataturk Dam



❑ Emirdag Transformation Center



❑ Stadium Lighting



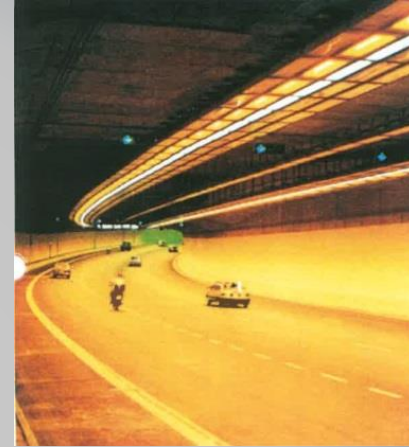
❑ YBosna Transformation Center



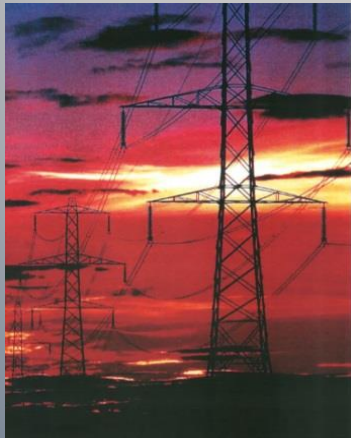
❑ Mersin OHT System



❑ Tunnel Lighting System



❑ Stadium Lighting



CG&P. LIGHT STEEL FACTORY



CG&P. LIGHT STEEL PROJECTS



CG&P. LIGHT STEEL PROJECTS



CG&P. LIGHT STEEL PROJECTS



CG&P. LIGHT STEEL PROJECTS



SUSTAINABILITY STRATEGY



DO BUSINESS WELL AND PROPERLY

- Ethics and Compliance
- Risk Management
- Responsible Management
- Sustainability Leadership
- Responsible Supply Chain
- Sustainability awareness among vendors
- Sustainability awareness among customers
- Innovation and R&D



CARE FOR EMPLOYEES

- Health and Safety at Work
- Employee loyalty
- Employee development
- Human Resources management
- Corporate memory and internal communications
- Sustainability awareness among employees



DEVELOP COMMUNITIES

- Welfare and development of local community
- Contribution to the development of the engineering profession
- Sustainability awareness in the schools
- Investment in education, culture-arts and sport



REDUCE ENVIRONMENTAL IMPACT

- Calculation and targeting of carbon and water footprints
- Green office practices
- Green building certificates
- Waste management strategy
- Energy efficiency practices

CERTIFICATES

📄 Housing & Development

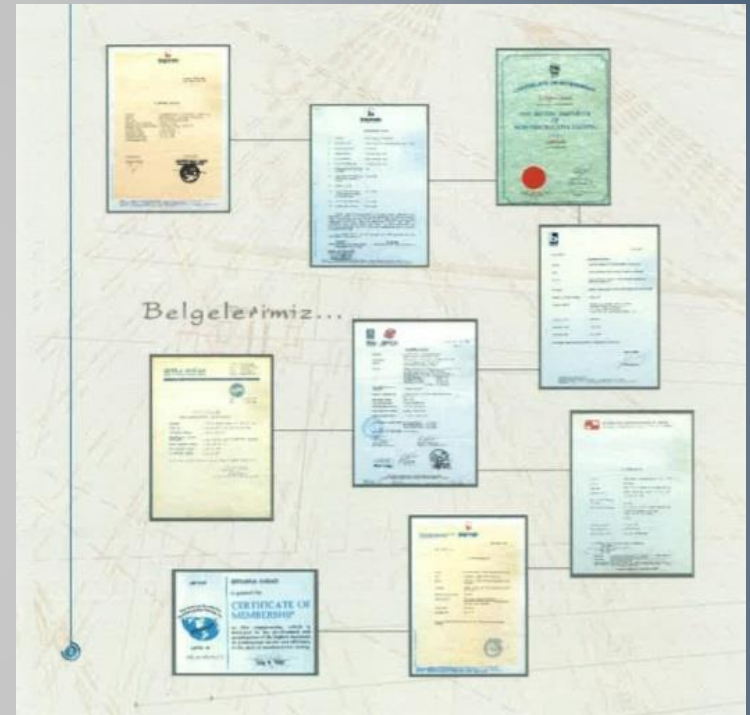


📄 Housing & Development



CERTIFICATES

📄 Certificates



🇷🇺 Russia



🇹🇷 Turkey



Canadian Prime Minister Justin Trudeau



📍 Turkmenistan Health Minister



📍 Ingushetia President



📍 Turkmenistan Health Minister



📍 Kiev, Bridge project contract signing



📍 Pakistan



📍 Pakistan





Chohan Group
Business Development

& PARTNER